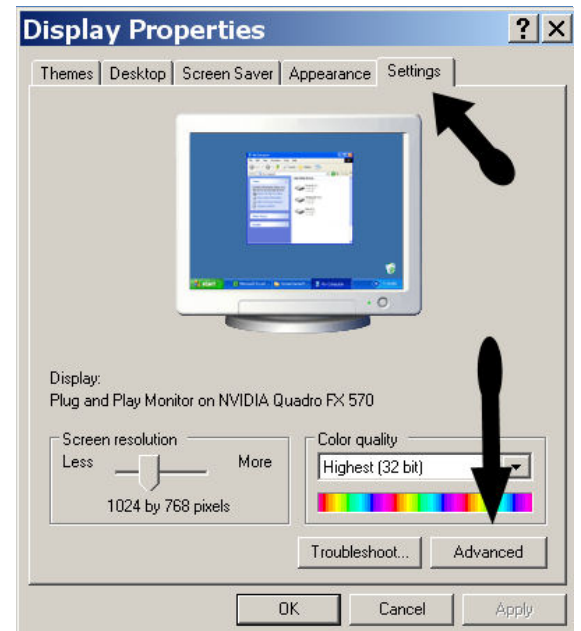


## Fixing poorly displayed SchoolLeader v9 window graphics on older XP computers

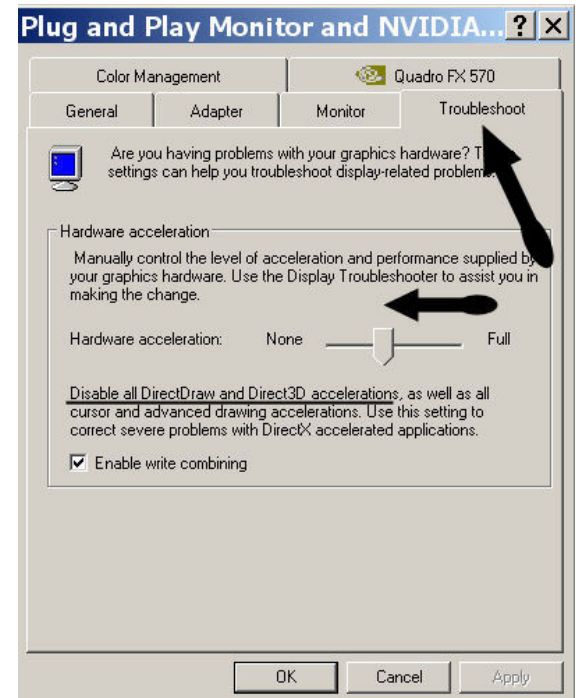
Some older PC's with Windows XP® may experience distortions in the 3D shading effects used in SchoolLeader V9. This is almost always correctable by turning down the Video “Hardware Acceleration” option available in Windows XP. It will correct the issue and normally cause no negative side effects for other graphics.

To reduce the Hardware Acceleration on you Windows XP computer do the following;

- 1) Right Click anywhere on the desktop. A pop-up menu will appear.
- 2) Select “Properties” from this pop-up menu. The “Display Properties” window will appear
- 3) Select the “Settings” Tab along the top and then click the ‘Advanced’ button along bottom right as shown →



- 4) Monitor Properties window appears
- 5) Select the “Troubleshooting” tab along top. Troubleshooting options appear as shown ->
- 6) Slide “Hardware Acceleration” bar to the left until you see the message “Disable All DirectDraw and Direct3d accelerations”.
- 7) Click “OK” button to save this setting. Click “OK” button again to close Display Properties window.



The SchoolLeader shading and graphics should now appear normal.