



SchoolLeader® News



Information toUnleash your School's Potential™

February 2010

SchoolLeader® Version 8.1 is Here!

Includes full support for Windows 7 (64bit) and more.....

Version 8.1 is a major maintenance release to provide full support for Microsoft's newer Windows 7 64bit operating system just released this year. Version 8.1 uses the latest generation of Microsoft's state-of-the-art database called SQL Server 2008 for full 64 bit compatibility, as well as new 64 bit drivers for some associated hardware. It is fully compatible with both 32bit and 64bit versions of Windows 7. It also continues to support Windows XP and Vista.

In addition to 64 bit support, SchoolLeader v8.1 provides faster performance with the same memory and CPU requirements as v8.0, as well as several enhancements related to reporting and backups.

Unlike other companies, Kressa Software does not force our customers to upgrade to the latest version to obtain support. However, due to the constantly changing world of computers, keep in mind that we limit our guarantee for "operability" to only the last three versions. That would now include versions 7.1, 8.0, and 8.1. For customers running older versions, now is the time to upgrade. Remember, software upgrades are **free** with an active support subscription. Call us for advice on getting upgraded

In addition to 64 bit support and performance improvements, v8.1 also includes several additional reports and enhancements. Go online to read the "Release Notes" on v8.1 to understand the details of those changes. In the meantime, here is a summary;

- Added a new Primary Guardian Contact List which lists Parent's by the Employer Name recorded in their Guardian Folder.
- Added a new function called "DBMonitor" that runs in the background to constantly reorganize the database for top performance as well as take nightly backups to a local drive, or disk of your choice.
- Improved "Find" features the in Student, Guardian, and Employee Folders that allow searching for names or parts of names instead of only ID #
- Enhanced the AR Deposit Summary report to show deposits broken out by all payment types, including; Check, E-Check, Bank Card, ACH, etc. This will allow you to more easily reconcile receipts involving third party processors such as IStream and FirstData,
- Enhanced all Transportation Rosters to show date along with Day-of-week in the header. It also now shows student totals by day-of-week to make it easier to check headcounts.

To learn more about these Version 8.1 changes, and others, go to "**Release Notes**" on the **Support** menu at www.SchoolLeader.com or call 800-894-7442 for more information.

Electronic Banking expands again

More choice for Bank card processing, more affordable check scanners

For those already familiar with our integrated electronic banking feature, this year brings a new option for credit card processing using *IStream Financial*. Of course, you can still sign up with FirstData if you so prefer, but more choice is always a welcome change we feel.

For those using our integrated Check Scanning and remote deposit services, SchoolLeader 8.1 now supports the use of a newer and more cost effective scanner called the CheXpress CX30. It is made by the same manufacturer as the TS-215 but is smaller, lighter, and less expensive than the previous model. SchoolLeader can still function with the more robust TS line of scanners, but, once again, more choice and options are always good.

For those not familiar with our Electronic Banking feature, SchoolLeader provides fully integrated remote check deposit, ACH, and Bank Card payment services for you and your customers. It is all seamlessly integrated into SchoolLeader's A/R functions.

This ultimately means less work, better organization, and more convenience for you by;

- Minimizing trips to the bank
- Improving payment timing and data accuracy
- Reducing time spent reconciling payments
- Instant online access to deposit activity, returned check items, check images and ACH payment details, 24/7 from any internet based PC.

To make it even better, there's no startup or additional software fees for our existing customers. Just upgrade to version 8.1 and you're ready to go!

Contact Kressa at 800 894 7442 to learn more about this feature and how to sign up. You can also learn more at www.SchoolLeader.com

Inside this issue:

SchoolLeader Version 8.1 is here! 1

Electronic Banking expands again 1

DataVault backup service for easy 2

SchoolLeader's all new Version 9 coming in Q4 2010 2

Unleashing your School's Potential - Tips and Tricks 3



The new CheXpress® CX30 is a bank quality scanner priced for the small business user. It's a more cost effective option to the TS series but still allows for quick scanning and accurate remote deposit of any check directly to your bank. Fully integrated with SchoolLeader, it offers Plug-and-Play connectivity to any Windows XP, Vista, or Win7 PC via any standard USB port.



Secure your data with our DataVault™ Backup service

DataVault™ Service for easy offsite backups

Have you checked your backup today? Be sure you have a backup plan!

Defining a strong database backup plan, and ensuring that it is executed regularly, is one of the most important maintenance tasks associated with your business computers and data. With your data secured, you can feel confident that a computer failure will have minimal impact on your business. We encourage you to implement a regular daily backup plan for all your computer data, and certainly your SchoolLeader database. The new *DBMonitor* tool can help you do local backups. If you are not sure how to use it, feel free to contact us for assistance and advice.

However, in addition to local backups, you should also be rotating your backups offsite periodically. This helps ensure your data is safe in the event of a catastrophe such as a fire or flood. Unfortunately, remembering to perform offsite backups isn't always easy with your busy schedule. To make offsite backups easier to perform, SchoolLeader offers a built-in service called DataVault™.

With DataVault you can quickly transfer a backup of your database across the internet to our secure Backup Servers with one click. There's no limit on the frequency or amount of backups you can perform and it can even be used with a regular dialup connection.

You can subscribe to DataVault for \$119 per year. If you would like more information visit our website or



SchoolLeader **VERSION 9** coming in Q4 2010 !

Completely rewritten. All new 64 bit technology. Ready for the future...

On the surface, 2009 seemed like fairly slow year for SchoolLeader, but in reality, we've been busier than ever! For the last 14 months we've been working on a complete rewrite of the entire SchoolLeader management system using the latest state-of-the-art 64 bit tools and coding platforms. In late 2010 Version 9 will be released. This new SchoolLeader will allow us to take advantage of the next generation of computers and software on the horizon.

You probably are asking yourself what this means for you and how it affects you. We completely understand and want to offer some answers to common questions we've been hearing.

Why a complete rewrite?

The world changes fast, and the world of computers changes even faster! To take advantage of all the newest hardware (hand held devices, tablet computers, etc.) we need to use tools that support them.

Also, the internet is becoming more of a viable place to conduct business and offer services for your customers. We want to take advantage of that for you.

One of our top priorities for the near future is to offer a secure and seamless online payment solution for your parents. A way they can pay online and have that payment flow directly into SchoolLeader. Also, a way to capture registration and inquiry information from the web and have it flow into SchoolLeader has been a big request. To provide those type of solutions, SchoolLeader needed to be redeveloped from the ground up. It's a herculean task, but if you are committed to the future, as we are, then it had to be done.

Do we have to pay for the new version?

No. Unlike some other companies, Kressa does not charge for upgrades as long as you are current customer. Even though this is truly an "all new" system, you can upgrade at no charge just like any other updates we have offered in the past.

Will my data fully transfer to the new system?

Yes, completely! There are some products out there which have recently offered a new replacement product but cannot offer full conversion for your data. That means you have to manually rekey some of your data. SchoolLeader Version 9 will be FULLY compatible with all prior versions. The built-in upgrade wizard will transfer ALL of your current information to the new database with no extra effort on your part.

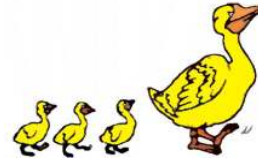
Will I have to learn SchoolLeader all over again?

No. We realize that you've made a significant investment in training for your staff, and aligning your manual business processes to SchoolLeader. That's why we've taken great care in ensuring the user experience is virtually unchanged for you. Although the ENTIRE system is different under the "hood", you will experience few differences in how SchoolLeader functions and looks. Some graphics are different with a more modern look. Also, some minor differences were made to things such as dropdown calendars, grid functionality, etc. However, all these changes were made for the better and will be easy to learn. Rest assured, the core functions operate the same.

There will be more about this as it's availability draws closer, so stay tuned for more details .

Unleashing your School's Potential!

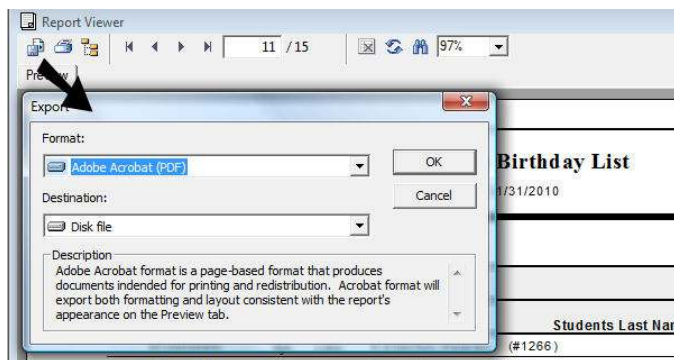
Tips and Tricks to keep your school marching along....



Tip 1: How to export reports to various formats (PDF, Excel, etc.)

If you are running Version 8 or later, there are many new options for exporting report results to other formats. You can send data to an Excel spreadsheet or Access database for example. You can also export the entire report to a Word document or even a PDF file.

Exporting your reports is easy. Once the report is displayed in our report viewer window, simply click on the export button. This is the first button on the left in the Report Viewer toolbar (see image below). This will display an export box where you can select the export format and also the destination. You can send the results to a file on your computer, an email message, etc.



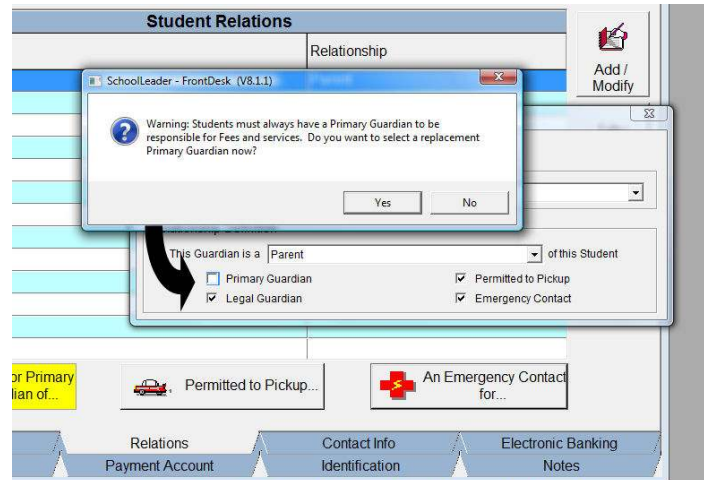
Tip 2: Changing Primary Guardians for a Student

You already know that a student can have defined relationships with many guardians — friend, parent, etc. However, only one can be designated as the “Primary Guardian”. This is a special designation which show them as the financially responsible person.

On occasion, you will need to change this Primary Guardian. There are two ways to handle this. If it's simply because a husband or wife needs a name change to meet a requirement with their employers reimbursement program, it's probably easier to just swap the names in both the Mom and Dad's folders. In other words, rename the folder currently listed for the Dad, to now be the Mom's name, and visa versa. The contact and address info is probably all the same. The advantage to this is that the history of payments will still all be associated with that original Guardian ID# — which now has been changed to the Mom or Dad's name.

However, if this is a court ordered legal change, you will probably want to use the built-in function to reassign the Primary to another guardian. This causes only the current outstanding balance to move to the new folder, and only future payment activity will be associated with that new person. All the past history will REMAIN with the prior Guardian so he/she can still have documented childcare payments for taxes, if necessary. Leave it up to the family needing the change.

To let SchoolLeader do the change for legal reasons, go to the Primary Guardians folder — Relationship Tab, and double click on the student's name needing to be changed. A dialog box will appear reminding you that a student always must have a primary guardian (see illustration). Select YES and choose the replacement primary guardian. SchoolLeader will automatically transfer the balance to the newly selected primary guardian automatically when the period is closed at the end of the week/month. Do NOT try to change the designation more than once in one period.



Tip 3: Archiving and purging old data to improve performance

Don't forget that your database continues to grow in size as each year passes. A large database can significantly slow down performance and make backups take longer. You should get into the habit of archiving and purging old data each year. Best rule of thumb is to keep the current years data plus the prior year available for immediate access. Anything older than that should be archived and then purged from your primary database. An additional backup (BAK file) should also be taken and placed in a safe location.

How do you do it? It's simple! Execute the SchoolLeader DBSupport program located in the SchoolLeader folder off the START button. Select the “Define Archive” button and then select the items from the menu that you wish to archive. SchoolLeader creates a backup of the current database for historical access and purges the remainder from the database. For more detailed help see the online users guide or contact our customer support.

Tip 4: Finding a Student, Guardian, or Employee when you don't know the full name

Sometimes you want to pull up the folder for a student or guardian but can only remember part of their last name. Maybe you only remember their first name. How can you find them without searching the entire list? Simple! Click on the “Find” button at the top of the folder. You can enter their last name “Flintstone”, part of their last name; “stone”, or even just part or all of their first name; “Fred”, or “Frederick”.

SchoolLeader will bring you to the first folder that matches your selection criteria. If that's not the correct person, no problem, simply search again. SchoolLeader will continue to the next person that meets the criteria. Keep doing that until you've found the one you want.

Tip 5: Keeping your database tuned and backed up automatically with DBMonitor.

We mention this often, but it's so important that it's worth mentioning again. Defining a strong database backup plan, and ensuring that it is executed regularly, is one of the most important maintenance tasks you

Continued on next page....



Tips and Tricks *(continued from prev. page)*

Want to contact us?

Sales: 800-894-7442 or sales@kressa.com
Support: 800-858-8570 or support@kressa.com

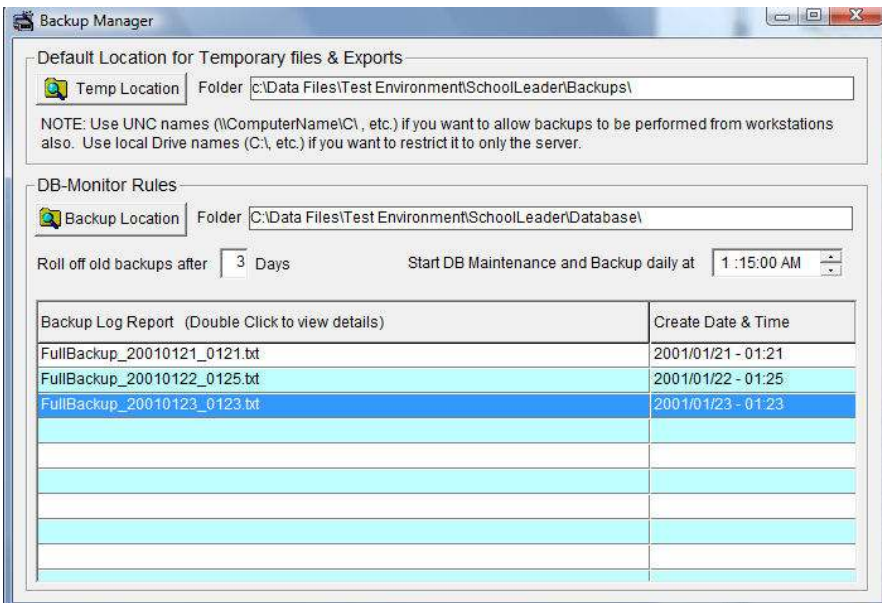
Sales Hours
 9am—6pm ET
 Monday-Friday

Support Hours
 8am—6pm ET
 Monday-Friday
 Email Support available 7 days a week

Check us out online
 at
www.SchoolLeader.com

can do. With your data secured, a computer failure will have minimal impact on your business. Without it, you quickly have a crisis.

Now it's easier than ever to keep your data safe with a new function we provide called **DBMonitor**. With only a few configuration options set, you have automatic nightly backups running to a local device in no time. This nightly process will not only backup your data and keep the desired number of copies, but it will also reorganize the data, reindex the tables, and fix any potential physical problems with the database! All this means more up-time and less problems.



Kressa Software Corporation
 3724 Hunter's Isle Drive
 Orlando, FL 32837