



## Product Release Notes & Overview

### SchoolLeader Version 8.1

February 2010

The following document details features and technology that are new -- or have been enhanced -- since the last release of SchoolLeader -- Version 8.0

- **Upgraded core database engine from Microsoft SQL Server 2005 SP3 to Microsoft SQL Server 2008 SP1**



Microsoft has recently released their first stable service pack for the latest version of their database management software. As a result, SchoolLeader's primary database has now been upgraded from *Microsoft SQL Server 2005 SP3* to *Microsoft SQL Server 2008 SP1*. Our testing has shown this newer version improves reliability and performance of data management within SchoolLeader, and also now makes SchoolLeader fully compatible with all 64 bit versions of Windows, including Windows XP, Windows Vista, and the new Windows 7. If you are running an older version of SchoolLeader (with an older version of SQL), the 8.1 installer will automatically upgrade your database to this latest version.

- **Added new “DBMonitor” feature to automatically maintain database health and backups**

Many users have been asking for a better backup option from within SchoolLeader that will take backups automatically and regularly. The new *DBMonitor* tool is our answer to that request. Originally developed for inclusion in our all new Version 9, it has been moved up to this interim release to give users access to this important feature sooner. *DBMonitor* uses our new .NET Framework development platform and runs as a true background “service” on all x86 and x64 servers. If you are running the SchoolLeader database on a dedicated Windows Server, there's no need to logon or stay logged on to run this service tool.

*DBMonitor* can be configured from the current *Backup Manager* window in the current *DBSupport* program (shown below) with three options to meet your specific needs.

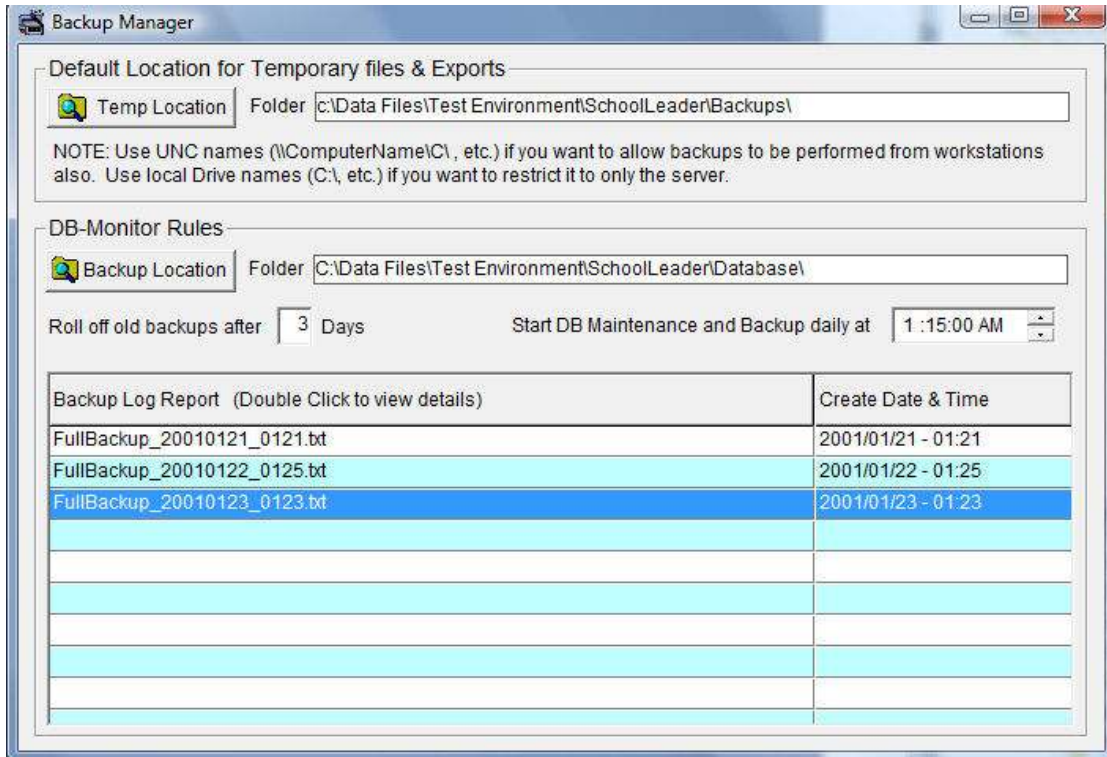
**Backup Location Folder** – allows you to define where these backup and maintenance reports should be stored. The location you select must be local to the server, however, it can be a removable drive, “flash” drive, etc. so the backups can be kept separately stored from the primary database drive. This helps protect against loss of both primary and backup data in the event of a drive failure.

**Roll off old backups after x Days** – This parameter allows you to define how many “generations” of backup should be kept. Theoretically, you only need one backup to recover from a problem. However, sometimes you may not want to recover the most recent backup. This can be true if a problem with your data occurred two days ago but you didn't notice it until today. In that situation, recovering yesterday's backup would not do much good since the problem existed yesterday as well. Of course, each backup requires large amounts of storage space, so a trade off must be made regarding how many days of backups to keep. The tool will default to 3 days.

**Start DB Maintenance and Backup daily at xx:xx:xx AM/PM** – This parameter allows you to specify the time of the maintenance steps. It will run once per day at the time you define here.

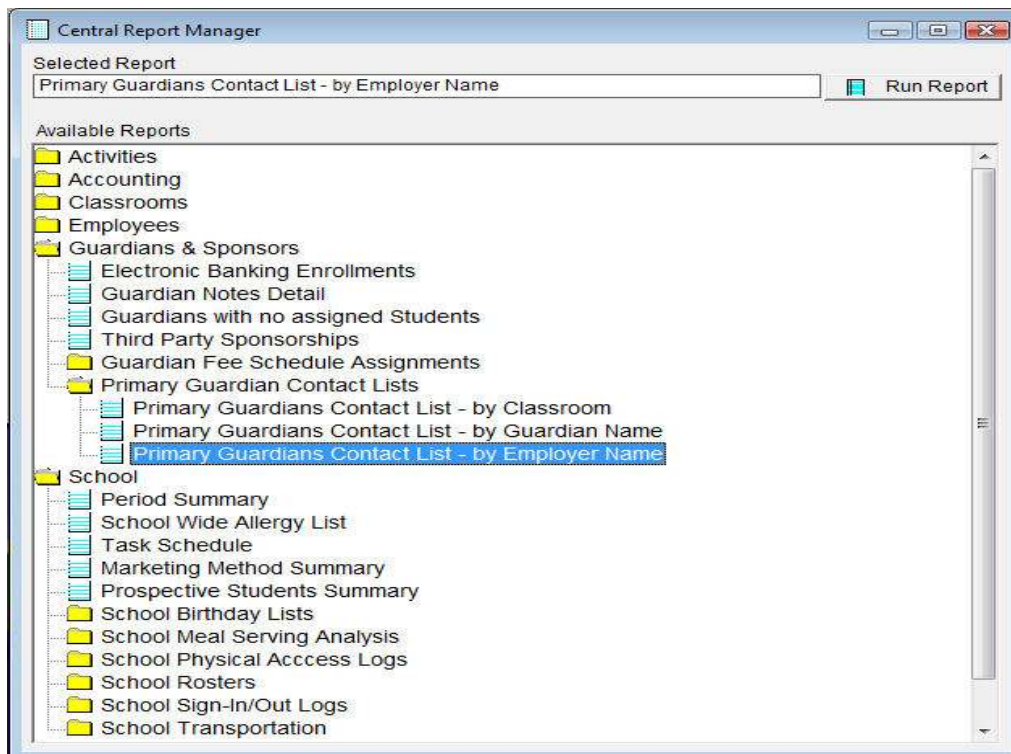
**Backup Log Report grid** – The grid lists all current maintenance reports available for review. There are several maintenance functions performed besides data backup. The database is checked for physical damage. If problems are discovered they are reported. Also, the physical data is reorganized to reduce fragmentation,

and the tables are reindexed. Each of these steps are independent of each other and run in sequence at the time designated. Each step produces its own results report that can be viewed from this window by double clicking on the desired item in the grid.



- **Added new Primary Guardian Contact List – By Employer**

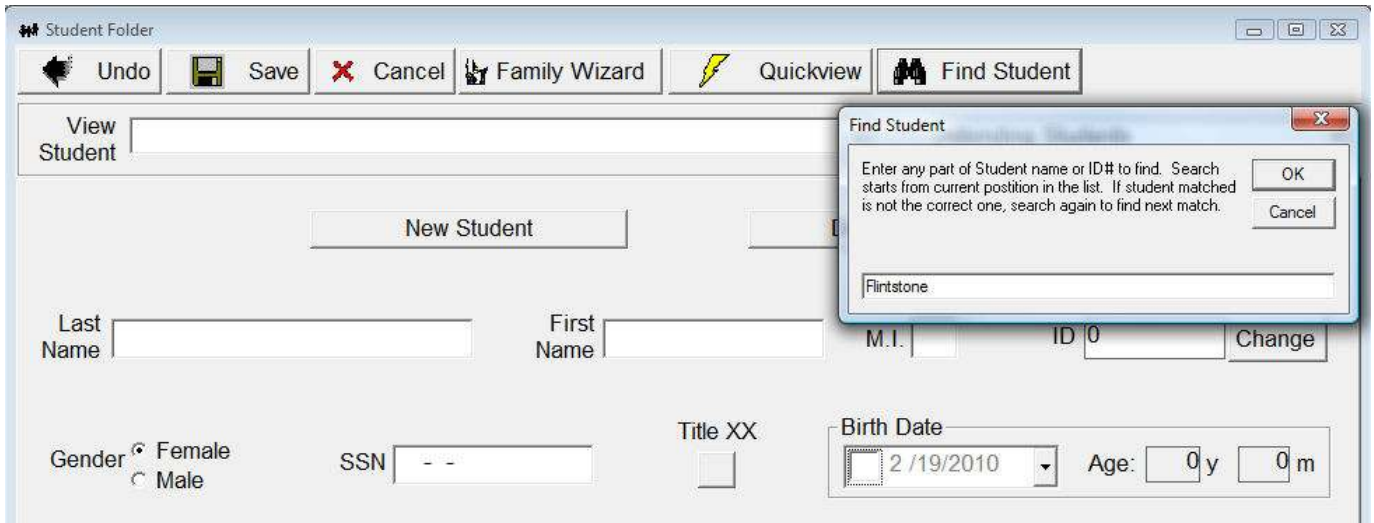
A new Contact List report has been added to the existing two that allows you to produce reports organized by the designated Employer names. This can be useful if you have a large representation of families who work at certain local companies, and you wish to target that group for a mailing or call out. Before this release, you needed to search the Primary Guardian Reports individually. You can find the new report as shown below;



- Enhanced the “Find” tool in the Student, Guardian, and Employee Folders


Sometimes you want to pull up the folder for a student or guardian but can only remember part of their last name. Maybe you only remember their first name. How can you find them without searching the entire list? Before this release, the “Find” button on the Student, Guardian, and Employee Folders only allowed searching by ID#. Now you can enter their last name “Flintstone”, part of their last name; “stone”, or even just part or all of their first name; “Fred”, or “Frederick”.

This enhanced feature will bring you to the first folder that matches all or part of your selection criteria. If that’s not the correct person, no problem, simply press the find button and search again. SchoolLeader will continue on to the next person that meets the criteria. Keep doing that until you’ve found the one you want



- Enhanced AR Deposit Summary Report for new Payment Types

Enhanced the AR Deposit Summary report to show deposit dollars broken out by all payment types, including; Check, E-Check, Bank Card, ACH, etc. This will allow you to more easily reconcile receipts involving third party processors such as IStream and FirstData,



### Deposit Summary

Date Range: 2/19/2008 -to- 2/19/2009

Childcare School Name  
123 Main St  
Orlando, FL 32837  
(407) 856-0058 :

Bank Account: Type in Bank Account Name Here (Acct#: 123456)								
Batch ID	Closed Date	Checks	E-Checks	Cash	Bank Cd	ACH	Other	Batch Total
1	04/04/2008	(\$18,527.70)	\$0.00	(\$780.00)	(\$624.50)	\$0.00	(\$30.00)	(\$19,962.20)
2	04/10/2008	(\$6,125.60)	\$0.00	(\$550.00)	(\$4,234.75)	\$0.00	\$0.00	(\$10,910.35)
3	04/14/2008	(\$4,022.60)	\$0.00	(\$310.00)	(\$784.00)	\$0.00	\$0.00	(\$5,116.60)
4	04/16/2008	(\$1,105.50)	\$0.00	\$0.00	\$0.00	\$0.00	\$0.00	(\$1,105.50)
5	04/16/2008	\$0.00	\$0.00	\$0.00	(\$1,297.00)	\$0.00	\$0.00	(\$1,297.00)
6	04/17/2008	(\$623.00)	\$0.00	\$0.00	\$0.00	\$0.00	\$0.00	(\$623.00)

- Enhanced all AR Payment Journal reports to support new Payment Types

Similar to the change made to the Deposit Summary, the AR Payment Journal report has been enhanced to break out payments by all payment types, including; Check, E-Check, Bank Card, ACH, etc. This will allow you to more easily reconcile receipts involving third party processors such as IStream and FirstData.

Guardian Name Related Students		Trans ID	Posting Date	Activity Date	Posting Description	Payment Amount & Type						
						Check	E-Check	Cash	Bank Cd	ACH	Other	Total
Allen, Mary (#4321)		15891	9/3/2008	9/3/2008	Payment - Thank You	(\$220.00)						(\$220.00)
Allen, Mary (#4321)		15968	9/3/2008	9/3/2008	Payment - Thank You	(\$220.00)						(\$220.00)
Allen, Mary (#4321)		14411	8/20/2008	8/20/2008	Payment - Thank You	(\$220.00)						(\$220.00)
Allen, Mary (#4321)		17691	9/18/2008	9/18/2008	Payment - Thank You	(\$240.00)						(\$240.00)
Allen, Mary (#4321)		16799	9/9/2008	9/9/2008	Payment - Thank You	(\$220.00)						(\$220.00)
Anderson, Brad (#4597)		16880	9/9/2008	9/9/2008	Payment - Thank You						(\$55.00)	(\$55.00)

- Enhanced all Transportation Rosters to show dates and total student counts

Enhanced all transportation rosters to now show the actual month and day (02/27) in each day of week column header. A simple addition that many have been requesting to help be certain they are checking off the correct boxes during role call. Also, for that same reason, a total head count has been added at the bottom of each days column to show total students expected on the bus for that day and trip.

Students Name		Boarding Log						
		2/14 Sun	2/15 Mon	2/16 Tue	2/17 Wed	2/18 Thu	2/19 Fri	2/20 Sat
Jones, Mary (#1220) Notes:		ON OFF	ON OFF	ON OFF	ON OFF	ON OFF	ON OFF	ON OFF
Smith, Taylor (#1219) Notes:		ON OFF	ON OFF	ON OFF	ON OFF	ON OFF	ON OFF	ON OFF
		ON OFF	ON OFF	ON OFF	ON OFF	ON OFF	ON OFF	ON OFF
		ON OFF	ON OFF	ON OFF	ON OFF	ON OFF	ON OFF	ON OFF
		ON OFF	ON OFF	ON OFF	ON OFF	ON OFF	ON OFF	ON OFF
<b>Daily Counts:</b>		0	2	2	2	2	2	0

## • Other Enhancements and Improvements

- **Better SafePASS memory management** helps reduce instances of crashes and finger template database getting corrupted in RAM. When this happens, no damage is done to the data, but SafePASS has to be restarted. Not all customers experienced these issues, but if you must restart SafePASS daily, installing v8.1 should improve this situation
- **School Statistics window** has been modified to treat “suspended” students as non-active students. Prior to this release they were included in the active student count. This was inconsistent with some other reports and has been corrected.
- **AR Balance Summary Report** distinguishes between Checks, Cash, and “Other” payments. When the new E-Check payment option was made available in version 8, the dollars associated with those transactions were classified as “Other” payments. They are now more appropriately defined as “Checks” along with the paper checks received.
- **Employee Education and Employee Certification reports** now have selection criteria to allow you to restrict the report to a specific date range. This can be useful if you need to file a report to a state agency for a specific time frame.
- **New improved “SL\_Setup” installer** now makes network “share” drives unnecessary. This makes installation and ongoing operations easier by eliminating the need to configure additional Local Area Network (LAN) settings and permissions.
- **Improved Windows Firewall detection and configuration** will reduce connection problems due to by Windows Firewall blocks. NOTE: This does not apply to 3<sup>rd</sup> party firewall products you may have installed such as “Norton Internet Security”, etc. You will still need to know how to manually program these tools if you want to use them with SchoolLeader.
- **Improved Database Monitoring and Activation functions** that eliminate the need for having the DBWatch process run constantly on the SchoolLeader server computer. As a result, DBWatch is not included in Version 8.1 and all of it’s functions have been either been eliminated or rolled into the new DBMonitor windows service.
- **Digital Check CX30 check scanner now supported.** The TS-200 series scanners are still supported, but these new CX scanners offer similar performance in a more compact and modern design with a lower cost.